

Multi-Project Management

KLUSA Modules

KLUSA is a web based multi-project management software solution. For easy overview and simple navigation KLUSA is divided into modules:

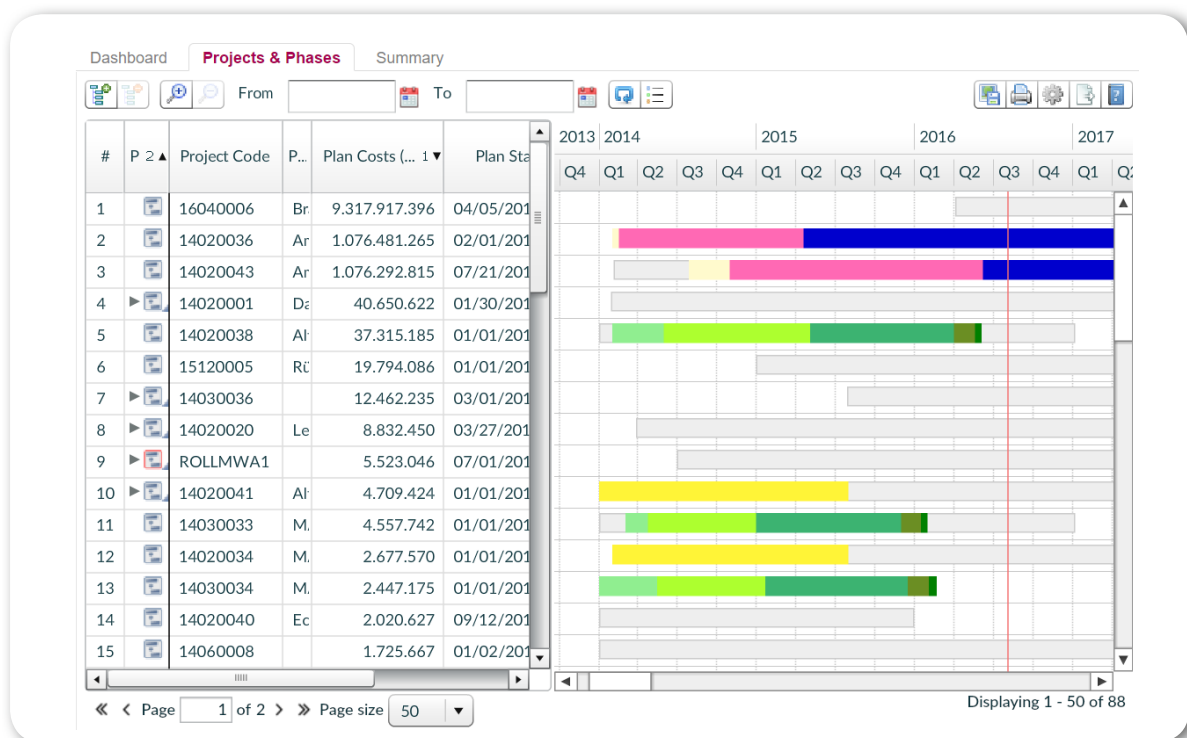
- **Project management** for planning, steering and reporting of single projects
- **Resource management** for maintaining pools, skills and individual resources in a request-commit workflow between project manager and resource manager

- **Multi-project management** for reports across a set of projects
 - **Demand management** for early planning and value benefit analysis
 - **Portfolio management** for strategic project portfolio analysis and scenario planning
- The Multi-Project Management Module is covering all controlling and project office's tasks.

Essential Tasks in Multi-Project Management

It is a challenge to monitor and control a large number of projects within a company or division. It is even more challenging the more the projects influence each other or have mutual dependencies and compete for the same resources. The tasks in multi-project management essentially include:

- Analyzing target compliance (scope, costs, deadlines)
- Analyzing the status and progress of projects
- Identifying critical plan deviations to allow early corrective action to be taken
- Consistent quality management and consistent project evaluation
- Standardizing project processes (e.g. formalized proposals, phase models for particular project types, etc.) and monitoring compliance
- Creating aggregated reports and decision support for management
- Comprehensive knowledge management (project learning and implementation into new projects)
- Documenting decisions



Example of a project phase overview in KLUSA

KLUSA Data Sheet

Multi-Project Management

Quality of project execution

In order to assess projects with regards to the quality of their execution, KLUSA provides

- a. the calculation of performance indicators (metrics, figures), and
- b. the evaluation of deviations from milestone plan vs. actual dates and plan vs. actual duration of project phases.

KLUSA calculates the following performance indicators for each project:

- Deviations from the planned deadline (deadline delays)
- Changes to the project content (this is determined by the number of change requests with changes to the project content, or scope)

- Budget deviations
- Deviations between e.g. the planned and actual expenditure

KLUSA determines the respective indicators using stored formulae. These individual indicators are then used to determine the project's efficiency. Sub-projects can also be taken into account. These indicators are summarized in the corresponding tables in the KLUSA Management module. Efficiency indicators for whole project programs can also be determined and visualized.

Using the KLUSA Management module, you can view the quality of project execution for all viewed projects.

viewed projects.

Indicators from project figures displayed in the KLUSA Management module.

KLUSA Management module

Multi-Project Management

Summary

Efficient and effective multi-project management is only possible with up-to-date data of the relevant information, presented in a well-arranged layout. With just a few clicks, the required information can be analyzed and relevant reports ge-

nerated. Multi-project managers, controllers, and project office employees are in a position to quickly evaluate and efficiently control numerous complex interacting projects with KLUSA.



Project Management Software & Consulting

For further information please do not hesitate to contact us.

OPUS Business Solutions GmbH

Landsberger Str. 290
D-80687 München

Phone: +49 89 45229 100
Fax: +49 89 55229 399
E-Mail: info@klusa.com
www.klusa.com

Copyright © 2016 OPUS Business Solutions GmbH. All rights reserved.

Microsoft Word, Excel and Powerpoint are registered trademarks by Microsoft Germany GmbH.